

Welcome To THE RIVERSBEND

It's almost as if Stonemill homes tap into another sense, a feeling that starts the moment you open the door. You see, the things you respond to in our homes aren't just lucky accidents. They're the result of over 14 years of research into how people live. SM-Design is an art, a science, a unique ingredient in each home we build that enhances its value.

Design

Great design isn't measured in square feet on a calculator. It's expressed in cubic feet and light and the way a room feels as you enter it. It comes from the imagination.

Choice

Imagine trying to build your dream home with only a handful of choices. Neither could we. That's why, for those of us who are accustomed to getting it our way, there could be no better choice than Stonemill.

Service

It may not be the first thing you look for when comparing home builders. But it will have a greater impact on your home owning experience than any other single factor.



Front

Quality



Back

Beauty



Kitchen

Cuisine



Kitchen

Fasty



Gather

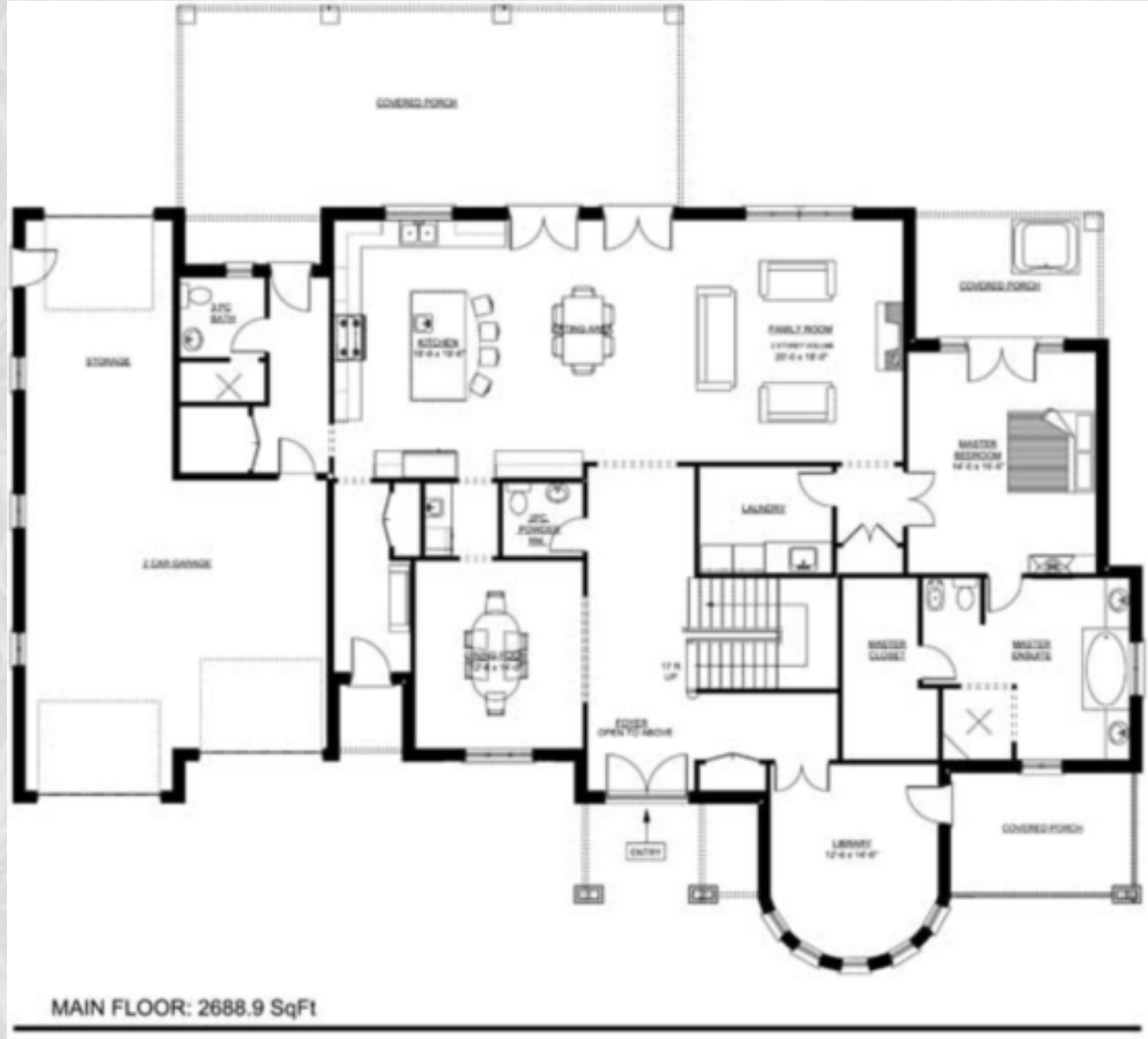


Cozy

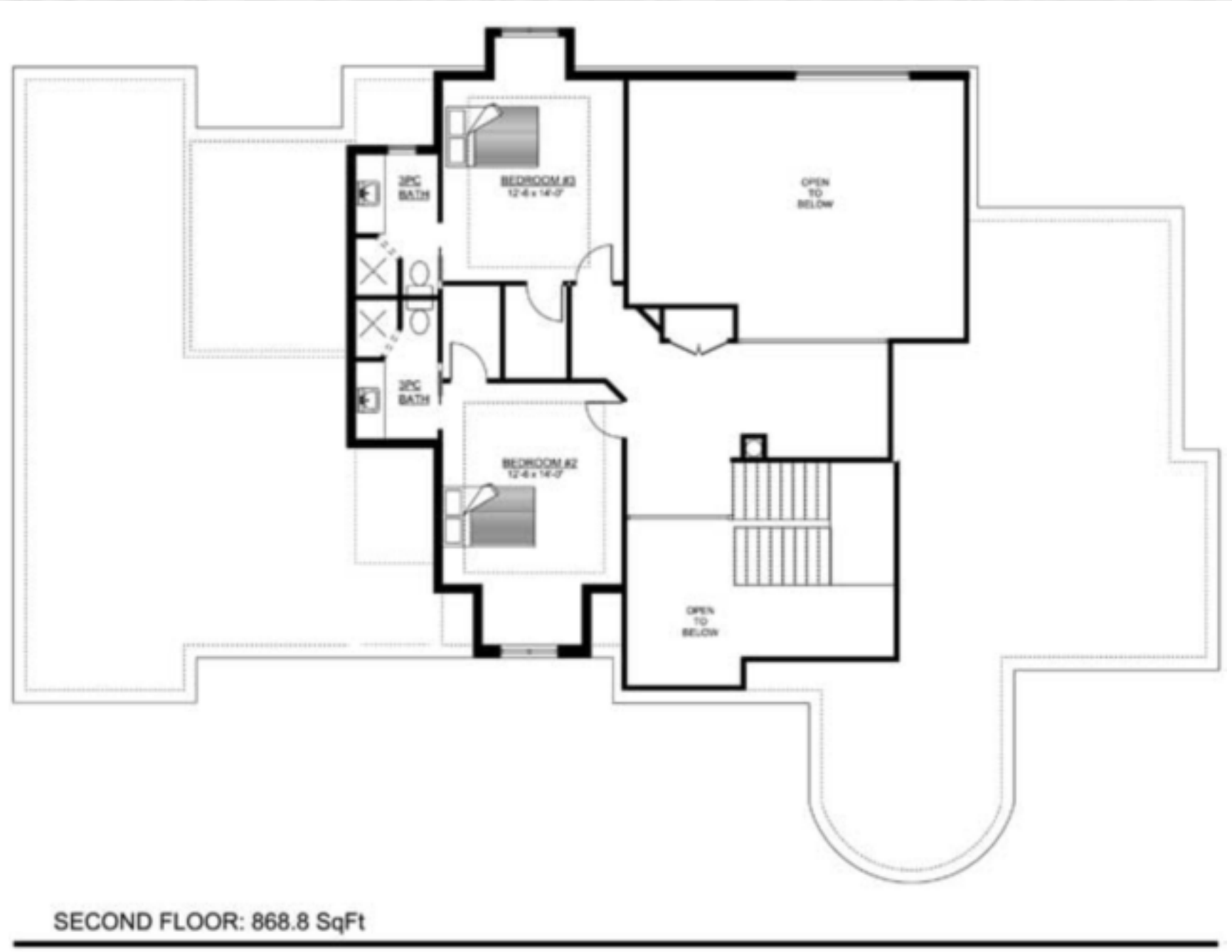


Roomy





MAIN FLOOR



SECOND FLOOR

STANDARDS OF EXCELLENCE

UNIQUE CLASSICAL EXTERIORS

- Premium Shouldice “Q” Stone for front elevation
- Pre-Cast Shouldice Trim, Arches, Keystones, & Sills
- Durrock premium stucco finish with 8” window trims
- Brick Soldier Coursing as per Elevation Detail
- Pre-Finished maintenance free aluminum soffits, Facia, Siding & Downspouts
- 30 year – Certainteed Landmark fiberglass Shingle
- Poured concrete front and back porch.
- Energy Star, Gas filled Casement thermo pane Vinyl Windows
- Fiberglass Insulated Entrance doors with inset windows & sidelights
- Metal Insulated French Garden Doors
- 18” Vinyl Transom for all doors including Garden Doors
- Steel Insulated paneled garage doors with remote openers
- Two exterior water taps, garage & middle of side wall
- Two weatherproof exterior outlets, front & rear elevations
- 6 exterior soffit pot lights & reinforced light box for porch

GOURMET KITCHEN

- Custom Maple Kitchen with large center Island
- Matching Granite counter tops from builders samples
- Pewter knobs for cabinet doors
- Two leaded glass doors for display
- Double compartment “spillway” stainless steel sink with single lever faucet
- Exhaust fan over stove area vented to outside
- Heavy duty receptacle for oven and dedicated outlet for fridge & microwave, separate plug for Freezer
- Rough-in Gas piping for gas stove & For Rear BBQ
- Split electrical outlets at counter level for small appliances
- 20 Amp GFI outlet for outlets within 1 meter of sink
- Rough in plumbing for dishwasher

MASTER BEDROOM & ENSUITE

- Master Bedroom with 36”Gas fireplace & hardwood flooring
- Double door entry with privacy lock
- Gas fireplace with oak top
- Walk-in Closet
- Double French door entry to ensuite
- Ensuite with porcelain floors & marble tub deck
- Custom tiled shower with shower light

- Premium Tiles from builders select line
- 6’ whirlpool tub with tumbled marble deck & surround
- Choice of custom quality bathroom cabinets & counter tops from builders select line
- Single or double sinks in vanity as per plan
- White bathroom fixtures – American Standard or equal
- Chrome single lever faucets & pressure balanced flow restrictor shower valve

SPACIOUS MAIN BATH

- Choice of custom quality bathroom cabinets & counter tops from builders select line
- Single level chrome faucets
- White bathroom fixtures – American Standard or equal
- Bath tub with pressure balance, flow restrictor shower valve
- Custom tiles from builders select line
- Porcelain floor tile laid on cement with wire mesh

ELEGANT POWDER ROOM

- White Pedestal Sink (St Anne)
- Single Lever chrome faucet
- White toilet – American Standard or equal
- Porcelain floor from builders select line
- GFI protected outlet and Exhaust fan
- Door lock set - Antique Pewter or Nickel finish lever

DISTINCTIVE LIVING AREAS

- 10’(Ten) foot ceilings on the mainfloor
- 4” Cherry/Oak/Maple hardwood floors throughout
- Choice of tile or hardwood for kitchen area
- 48” Oak/Cherry staircase and landing for main/lower level
- Wrought Iron decorative spindles with 3” oak/Cherry handrail
- 42”Gas Fireplace with Black Marble surround - family room.
- 36”Gas Fireplace in Master Bedroom with oak/Cherry top
- Solid core 8 foot interior doors for main floor
- 8 foot French doors with leaded beveled glass
- Vaulted or trayed ceilings according to design
- Rounded corner beads with square ends for trim
- 4”casing w/ backbend & 8” baseboards & 8’doors(Mainfloor)
- 4”casing w/ backbend & 8” baseboards 7’ doors(Secondfloor)
- Antique Pewter or Nickel finish lever door sets with matching hinges and door stops
- Interior Walls finished with one coat premium primer and two coats of light based premium “satin” finish colour.
- White Decora plugs & switches
- 20 low voltage 4” pot lights for main floor only. Additional Pot lights available @\$185.00 each

- RG6 Satellite cable to every room
- Cat 5 & 3 Line telephone cable to every room
- Inter-connected smoke & carbon detectors
- Rough in plumbing for washer and heavy duty electrical receptacle and vent for dryer
- 36” White Laundry base and upper cabinet

MECHANICAL

- Hi-efficiency forced air gas furnace with electronic ignition
- Central air conditioner & Humidifier
- Gas water heater is a rental
- 200 Amp circuit breaker panel with all copper wiring
- Abs and copper/Plastic plumbing throughout
- Rough in central vac

QUALITY CONSTRUCTION

- 10”poured concrete foundation walls with exterior drainage membrane
- 2” x 6” Exterior wall construction with R20 insulation
- 1/2” Ply sheathing for stucco areas & 7/16” osb for stone areas
- R41 blow in insulation blanket in roof
- R41 spray foam insulation for living space above garage
- R12 insulation for garage exterior walls
- Engineered roof trusses with 3/8” plywood sheathing

- Engineered floor joists for large spans
- 5/8” tongue & grove ply sub floor. Nailed, glued & screwed

AVAILABLE UPGRADES

- Heated floors for tiled areas
- Travertine and limestone floors & walls for bathrooms
- Chandelier hoist for open to above areas
- Heat Revovery Ventilators
- Spray foam wall insulation upgrade
- Crown Plaster moldings as requested
- Natural stone exteriors with limestone sills
- Armour stone walk up from basement
- Solid wood front door systems

FULL TARIION WARRANTY

Stonemill Developments Inc
Tarion Builder # 34286

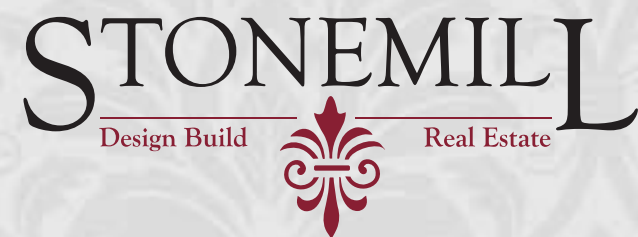


STONEMILL DEVELOPMENTS INC.

TEL: 905-847-5900

EMAIL: info@stonemill.ca

WEBSITE: www.stonemill.ca



Your Dream Home Awaits You

